

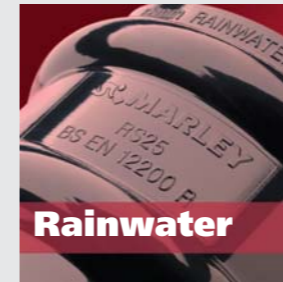
March 2009

The Marley Range

Rainwater ■ Underground ■ Soil & Waste ■ Quantum ■ Equator ■ Alutec Rainwater ■ Roof & Floor ■ Stormwater

 **MARLEY**
PLUMBING & DRAINAGE

The Marley Range...



Rainwater

Page 4



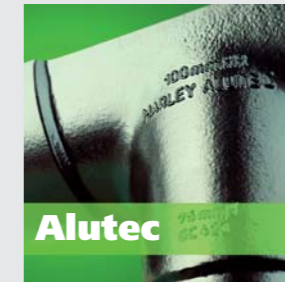
Equator

Page 12



Underground

Page 6



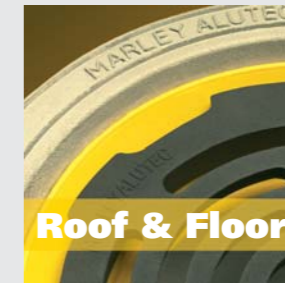
Alutec

Page 14



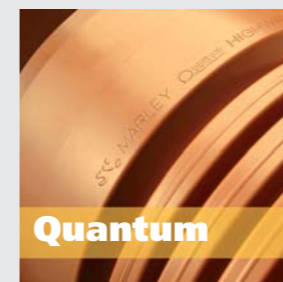
Soil & Waste

Page 8



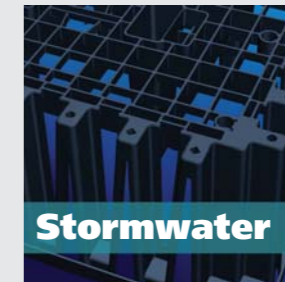
Roof & Floor

Page 16



Quantum

Page 10



Stormwater

Page 18

Rainwater

Life⁴ – rainwater systems that stay looking better for longer

Life⁴ gutters and downpipes:

- **look better** with high gloss levels
- **for longer** with stable colour retention levels of up to four times longer than standard PVCu rainwater systems

Available in 4 profiles with square and circular downpipes.

Marley rainwater fittings use the innovative **EASYclip**, which makes jointing both easy and reliable.

It is possible to adapt the **EASYclip** to make fittings suitable for 'notch' jointing, by fitting a 'notch adaptor' into the centre of the **EASYclip**. The adaptor will then fit into a notch cut into the back of the gutter.

This is an effective way of allowing gutter to expand and contract due to temperature change without gutter and fitting pulling apart. There is also no need to anchor fittings to the fascia.

This method is ideal to anchor the last joint of a gutter run which ends with a stopend.



Underground

MARLEY
UB4300R 110mm30°

Solid wall PVCu underground drainage systems

Marley offer a comprehensive range of pipe and fittings.

The original solid wall PVCu underground drainage system is suitable for use in domestic drains and public and private sewers. Available in 3m and 6m lengths with a wide range of high performance fittings and accessories suitable for use with solid wall underground drainage pipes accessories and ancillary products. Perforated pipes available in 110mm diameters. A number of underground drainage fittings are also suitable for use with 150mm Quantum Sewer Drainage pipes.

At a glance - the advantages of Underground Systems

- five different gully combinations
- lightweight and cost effective
- 250mm and 450mm chambers with 110mm or 160mm outlets
- complies with the relevant British and new European Standards
- easily available throughout the UK



Soil & Waste

MARLEY
SY402
110mm x 87.5°
PVC
BS EN 4514:2001

Soil systems

- 82mm/110mm/160mm
- pushfit and solvent fittings
- plain ended and socketted pipe
- available in up to four colours
- fire protection range
- WC Manifolds
- PVCu
- manufactured to BS EN 1329: 2000

Waste systems

Waste systems are available in different sizes and colours and have different methods of jointing:
Sizes: 32mm (1¼") 40mm (1½") or 50mm (2").

Colours: Waste is normally supplied in white, but is also available in grey, black and brown.

Jointing: Push-fit jointing is a simple push together jointing method using a ring seal to make the joint watertight. Compression jointing uses a screw cap and is useful when extending or repairing an existing system. Solvent weld joints are formed using solvent cement which softens the plastic initially and then dries hard to make a strong joint which cannot be taken apart.

Traps: An extensive range of high gloss, injection moulded traps is integral to Marley's waste range.





Quantum

Quantum

Quantum Sewer grade pipe systems and Marley Quantum structured wall Highway systems are both available in 150mm, 225mm & 300mm.

- full range of BBA approved high performance fittings.
- stronger than the equivalent solid wall pipe.
- reduces site cost and plant utilisation.
- all pipes are compatible with BS EN1401 fittings.
- highway pipe available as fully and half slotted versions.

Also available, Quantum Highway in 3 sizes: 400mm, 500mm and 600mm. Manufactured in black HDPE with a smooth bore (coloured grey) and supplied in 6m lengths with integral sockets. The range includes branch fittings with 150mm & 225mm inlet. Meets the requirements of The Specification for Highway Works, clause 501-3.



BBA 06/H122
88/1977
92/R070
94/2985
98/3486



Equator

MARLEY
EBRT122

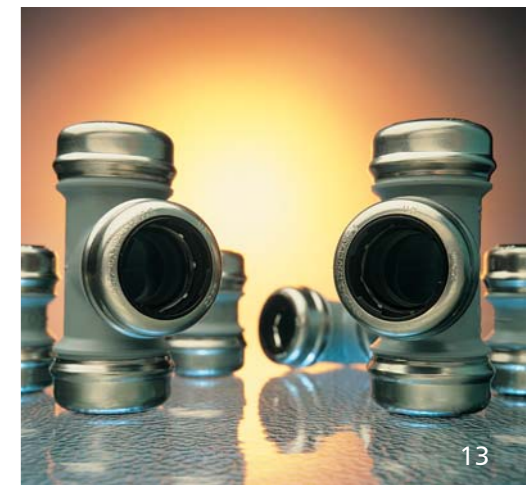
Equator

Equator is ideal for hot & cold water or central heating installations.

Manufactured from cross-linked polyethylene (PE-X), Equator offers excellent performance capabilities, and its benefits, both practical and financial, offer a real alternative to copper.

- tamperproof fitting – the unique grip release mechanism ensures that the system can only be disassembled through the use of a special de-mounting tool
- Equator has been designed to meet the requirements of BS 7291: Parts 1 & 3; Class S
- the complete Equator system is backed by a 30 year guarantee
- British and Scottish Gas have accepted Equator as being suitable for open-vented and sealed central heating systems and also eligible for acceptance onto their 3-Star Service cover

equator



100mm HR
MARLEY ALUTEC

Alutec

76mm
GC 423

Alutec aluminium rainwater systems

Alutec are innovators in aluminium rainwater systems, with concepts and designs to inspire the specifier and assist the installer.



Evolve is one of the most sustainable and cost effective rainwater systems in the UK today. Half round in profile, and available in Heritage Black and Nordic Silver within 72 hours.

Aligator® Classic

Classic is a decorative ogee gutter with all the benefits of other aluminium systems but at a substantially lower price. Classic utilises the proven Aligator® joint, but with external union fittings to maximise flow capacity.

Modern systems

The modern range of Alutec gutters can be used on many different styles and types of building. This range features the Aligator® snap fit joint method. An internal gutter union and concealed fascia bracket provides a smooth uninterrupted line at the eaves of the building.

Traditional range

Traditional gutter systems are designed specifically for replacement of old cast iron gutters or to reflect the traditional style of the building. Offered as an additional colour, a special coating is available Heritage Black, a finish which gives the look, feel and appearance of painted cast iron.



Roof & Floor

Alutec roof, floor & shower outlets

Each component in the range has been engineered to achieve design flexibility and the highest performance specification.

Roof outlets

Alutec aluminium roof outlets can be used with all types of flat roofs with bituminous or multi-layer waterproofing membranes. Available in four sizes and for a variety of applications.

Shower outlets

Alutec shower outlets are supplied fully assembled complete with the floor grating, clamping ring and trap set for either sheet flooring or tiled floors. Gratings are available in round or square, coated in aluminium or nickel bronze.

Floor outlets

Alutec floor outlets suitable for internal or external applications, the range is available with or without a trap and with a variety of nickel bronze gratings, with a spigot which can be cut to length.



Stormwater

Waterloc 250

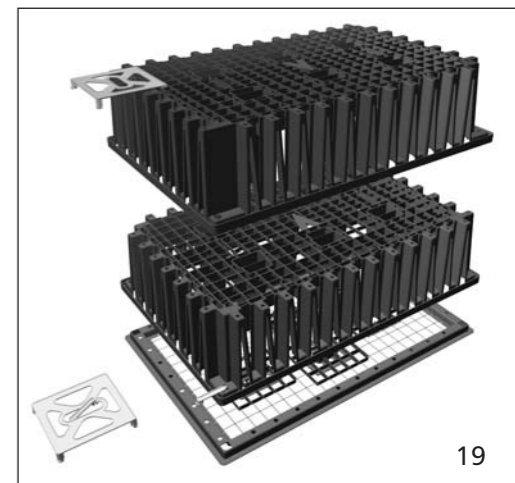
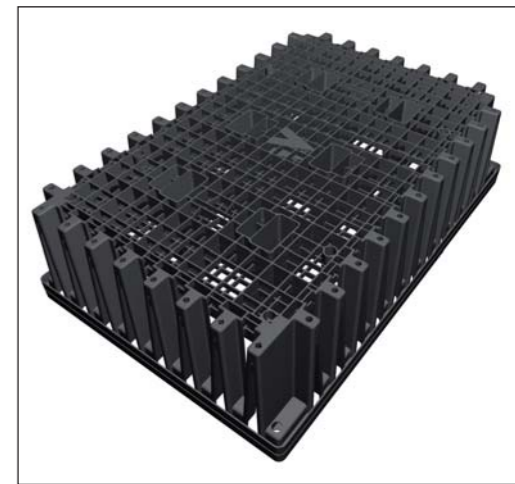
Waterloc 250 is a new design of stormwater storage cell which can be used for infiltration, attenuation or rainwater harvesting applications. The innovative design of waterloc 250 allows for quick installation in layers producing a secure tank, which can be configured to suit the area available. The inlet chamber provides effective access to any installation. As with conventional soakaways, concerns have been expressed over the tendency of cell type structures to silt up over time with no means of cleaning or removal of debris. This is dependent on site conditions, however use of the inlet chamber provides a number of benefits over conventional installation methods.

Flowloc

Flowloc is a vortex flow control device which controls the flow rate regardless of the upstream pressure head.

- Complete package – includes chamber and filter
- Available “off-the-shelf” options
- Does not require a man-entry chamber
- Chamber also forms a 600mm Silt trap

waterloc250





PLUMBING & DRAINAGE

Head Office

Lenham, Maidstone, Kent ME17 2DE

Telephone: 01622 858888

Fax: 01622 858725

marley.co.uk

Further information

For Technical advice please call 01622 852695

For general enquiries and details of your nearest stockist please

call the customer services department on 01622 852585

email: marketing@marleyext.com

Scotland

Birkenshaw Industrial Estate

Uddingston, Glasgow G71 5PA

Telephone: 01698 815231

Fax: 01698 810307

Export Division

Lenham, Maidstone

Kent ME17 2DE England

Telephone: +44 (0)1622 858888

Fax: +44 (0)1622 850778

an OAliaxis company